



# Strippit PX-Series

PUNCH, BEND, TAP AND FORM



Sheet Metalworking, Our Passion, Your Solution

Архангельск (8182)63-90-72  
Астана (7172)727-132  
Астрахань (8512)99-46-04  
Барнаул (3852)73-04-60  
Белгород (4722)40-23-64  
Брянск (4832)59-03-52  
Владивосток (423)249-28-31  
Волгоград (844)278-03-48  
Вологда (8172)26-41-59  
Воронеж (473)204-51-73  
Екатеринбург (343)384-55-89

Иваново (4932)77-34-06  
Ижевск (3412)26-03-58  
Казань (843)206-01-48  
Калининград (4012)72-03-81  
Калуга (4842)92-23-67  
Кемерово (3842)65-04-62  
Киров (8332)68-02-04  
Краснодар (861)203-40-90  
Красноярск (391)204-63-61  
Курск (4712)77-13-04  
Липецк (4742)52-20-81

Магнитогорск (3519)55-03-13  
Москва (495)268-04-70  
Мурманск (8152)59-64-93  
Набережные Челны (8552)20-53-41  
Нижний Новгород (831)429-08-12  
Новокузнецк (3843)20-46-81  
Новосибирск (383)227-86-73  
Омск (3812)21-46-40  
Орел (4862)44-53-42  
Оренбург (3532)37-68-04  
Пенза (8412)22-31-16

Пермь (342)205-81-47  
Ростов-на-Дону (863)308-18-15  
Рязань (4912)46-61-64  
Самара (846)206-03-16  
Санкт-Петербург (812)309-46-40  
Саратов (845)249-38-78  
Севастополь (8692)22-31-93  
Симферополь (3652)67-13-56  
Смоленск (4812)29-41-54  
Сочи (862)225-72-31  
Ставрополь (8652)20-65-13

Сургут (3462)77-98-35  
Тверь (4822)63-31-35  
Томск (3822)98-41-53  
Тула (4872)74-02-29  
Тюмень (3452)66-21-18  
Ульяновск (8422)24-23-59  
Уфа (347)229-48-12  
Хабаровск (4212)92-98-04  
Челябинск (351)202-03-61  
Череповец (8202)49-02-64  
Ярославль (4852)69-52-93

Киргизия (996)312-96-26-47    Казахстан (772)734-952-31    Таджикистан (992)427-82-92-69

<http://lvd.nt-rt.ru> || [dvz@nt-rt.ru](mailto:dvz@nt-rt.ru)

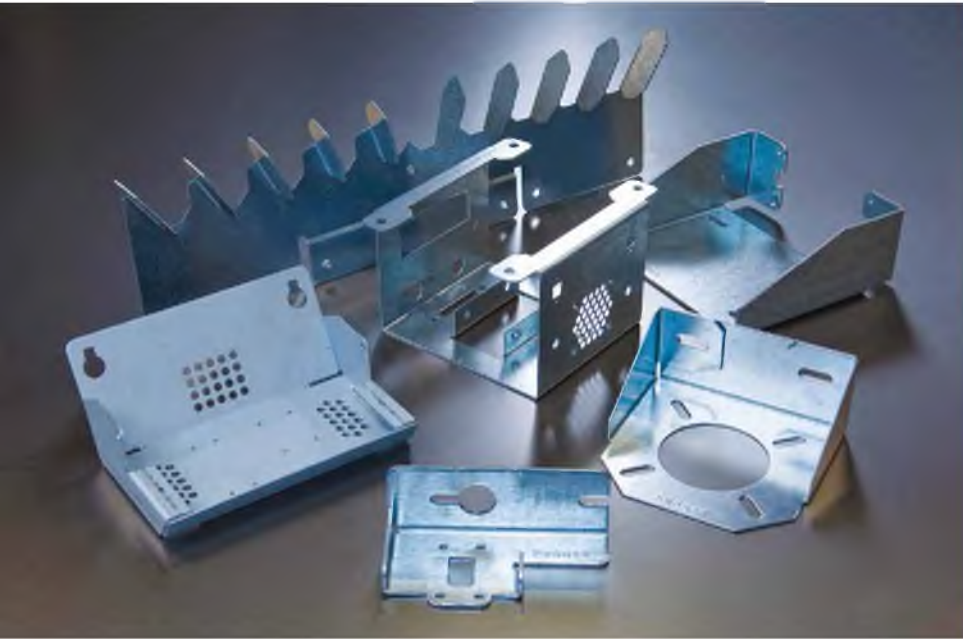
STRIPPIT PX-SERIES

# Punch, form, bend and tap on a single machine

The Strippit PX-Series offers the flexibility to punch, form, bend and tap on a single machine. Realize complete multiple processes, including complex, three-dimensional parts. The Strippit PX-Series punch press provides exceptional forming capabilities, all-tool rotation of up to 200 tools, high hit rates, large work piece handling and is available with automation options.

- Advanced forming and bending
- Large tool capacity
- High-speed operation
- Energy efficient
- Wide clearance and free space around the punch head





# Strippit PX-Series

MORE THAN JUST A  
PUNCH PRESS

- **High hit rates** of up to 505 HPM at 25 mm pitch
- **Advanced forming capabilities**, bend flanges up to 75 mm high
- **20 tool stations** accepting tools up to 90 mm in diameter, up to 200 tools with use of indexable Multi-Tools
- **200 kN** configuration
- **Energy Reduction System (ERS)** reduces energy consumption
- Finished part **accuracy** of +/- 0,10mm with **repeatability** of +/- 0,05mm over the entire table
- T-style **tooling compatible**
- **Programmable and relocatable** work clamps for complete sheet usage
- **Programmable parts chute**
- **Smart Stroke** automatically optimizes the ram stroke
- PC-based Fanuc **CNC control**
- Optional offline programming software, **CADMAN® - P**, with 3D visualization and simulation
- **Modular automation** options, retrofits are possible

## KEY FEATURES

# Advanced punching & forming

*Advanced punching, forming,  
bending and tapping for  
maximum added value*

## SINGLE HEAD ALL TOOL ROTATION DESIGN

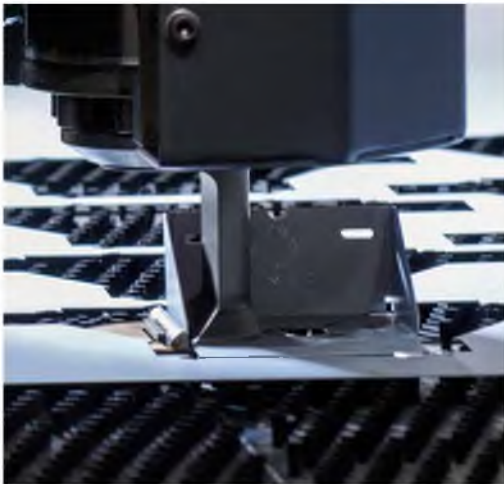
The Strippit PX-Series features a single-head system that provides the versatility of 20 indexable tool stations with up to 90 mm in diameter. Set-up and tool change time is minimized thanks to the circular tool magazine and the full rotation capabilities of each station.

## LARGE TOOLING CAPACITY

All stations can be equipped with punching, forming, bending or tapping tools and 5- or 10-station indexable Multi-Tools, providing a capacity of up to 200 tools. Quick change punch and die holders speed tool set-up and changeover.

## OPTI-BEND

Bend small boxes, brackets, knockouts, louvers and countersinks with flange heights up to 75 mm. Parts at any angle on the sheet can be formed, punched, and bent. These capabilities reduce set-up time and part handling.



*opti-bend*



*embossing*



### OPTI-TAP

An optional fully automatic tapping tool system from Wilson Tool allows tapping in materials up to 8mm thick in sizes from M2.5 to M5 and M6 to M10.

### OPTI-MARK

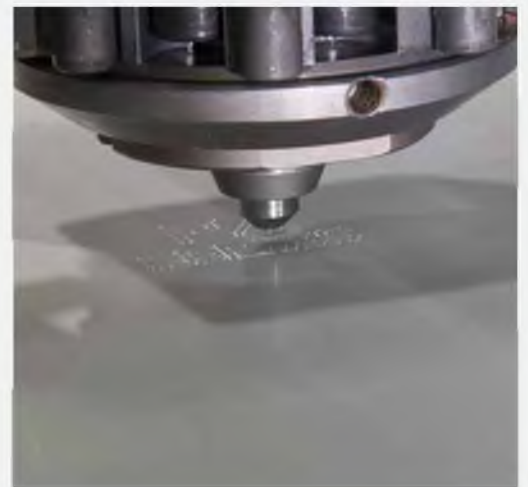
An optional 40 character ID stamping tool from Wilson Tool eliminates secondary parts marking operations and allows complete traceability of parts through the fabrication process. Character set includes A to Z, 0-9, - / , . and special characters.

### SCRIBE

An optional diamond-tip scribing tool provides accurate marking capabilities from logos to serial numbers. The scribe tool produces a consistent depth and won't deform the material or mark the underside of the sheet.

### WHEEL

An optional wheeling tool provides flexibility through production of embosses, slits, ribs and offsets on a wide range of materials with no burrs or nibble marks.



*scribing tool*



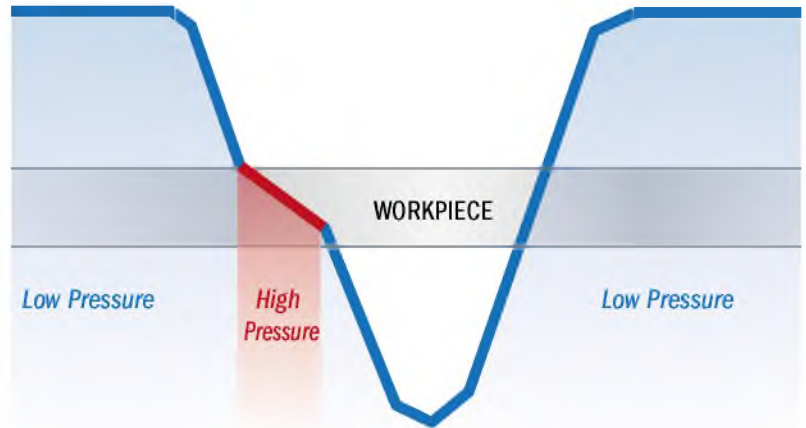
*tapping tool*



## KEY FEATURES

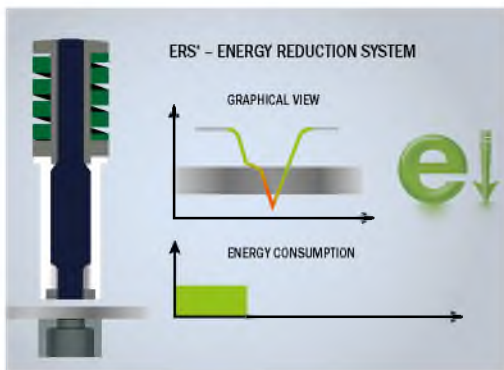
# Optimised operations

Maximize productivity and reduce energy consumption



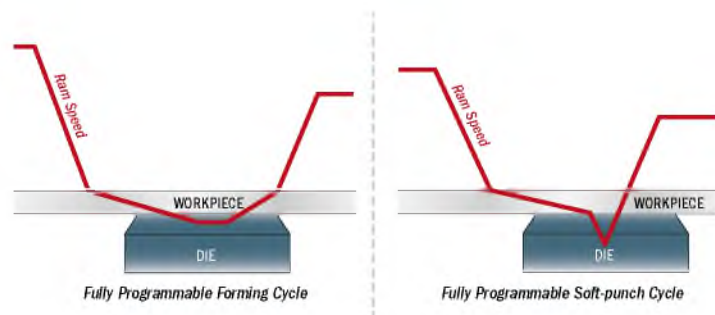
### ENERGY SAVING PRESS DRIVE

A unique **Hi-Lo pressure system** provides energy efficiency during machine operation. The system recognizes when, during the punching cycle, speed or pressure is required and adapts automatically. Speed is compensated when only power is required and vice versa, resulting in lower overall energy consumption.



### ERS - ENERGY REDUCTION SYSTEM

The **Energy Reduction System (ERS)** automatically reduces power consumption when the machine is idle. ERS reduces energy consumption by up to 15% compared to previous Strippit punch presses.



### PROGRAMMABLE RAM

Strippit PX-Series machines feature a fully programmable ram control system with the full tonnage available over the entire stroke of the ram. The system includes individual fully programmable ram cycle profiles for punching and forming, Wilson "Wheel" tooling, tapping and Quiet Punch to achieve the highest machine productivity possible.



## PROGRAMMABLE AND RELOCATABLE CLAMPS

The Strippit PX-Series features three fully programmable and re-locatable work clamps. Work clamps automatically position and relocate during the program for complete sheet utilization, resulting in material savings. Work clamp movement between jobs and during a punching cycle is defined via the offline software, reducing the set-up time and increasing productivity.

## PARTS CHUTE

A programmable parts removal chute is ideal for offloading small parts. Parts up to 500 x 525mm are separated from the sheet into a parts bin directly under the machine table or to an optional bin-sort system.

## INTEGRATED FANUC CONTROL AND MOTOR DRIVE PACKAGE

Each Strippit-PX is equipped with an integrated Fanuc motor, drive and control package. The PC-based control allows the machine operator to edit, input or output programs during machine operation. The Strippit PX-Series features direct-drive AC servo motors for fast acceleration and dynamic operation.

## CADMAN OFFLINE SOFTWARE

LVD's optional CADMAN® software package offers the ideal solution to quickly prepare and execute offline programs, including Punch-Bend programs.

**CADMAN®**



## KEY FEATURES

# Automation

*Enabling automated production  
from stored raw material to  
stacked finished part*

### COMPACT TOWER (CT-P)

A Compact Tower (CT-P) with 6 or 10 pallets provides full capabilities for loading, unloading, and storage of raw materials, skeleton and finished parts, enabling automated production from stored raw material to stacked finished parts. By loading the sheets from the warehouse and storing the skeleton / finished parts back into the warehouse the CT-P system creates a productive, flexible manufacturing cell capable of operating 24/7. The system handles sheets with material thicknesses up to 6 mm with a load/unload pallet storage capacity of 3000 kg. Pallet construction is designed for compact set up and convenient forklift manipulation.

### AUTOMATIC LOAD/UNLOAD (PA)

An automated load/unload system reduces manual worksheet handling by up to 80% and provides efficient processing of materials up to 3,5 mm. The compact, space-saving design loads and unloads material from the same side of the machine.



Compact Tower



## FLEXIBLE AUTOMATION (FA-P)

New design load/unload automation with part picking and stacking systems eliminates all manual sheet handling. Featuring automatic load/unload and part picking functions designed with today's high speed punching capabilities in mind. The FA-P can run in a complete "lights out" manufacturing environment.



## KEY AUTOMATION BENEFITS

- Maximize productivity and reduce downtime
- Continuous production
- Fully automatic loading and unloading during production cycle
- Safe, efficient handling of workpieces
- High flexibility to process a variety of material types and thicknesses



*Flexible Automation (FA-P)*



*Automatic Load/Unload (PA)*

# Service, our expertise

*“For us, customer service is about our relationship with the people who are an essential part of everything we do”*

One size doesn't fit all. With LVD customer service, we find a service solution that fits you. Our wide variety of service options is backed up by our team of well-trained service staff able to offer worldwide assistance LVD Customer Service, at a glance:

- **Worldwide coverage**, active in over 45 countries
- **More than 180 skilled field service engineers** worldwide
- **Over 5500 hours** of training every year by field service engineers
- **More than 40,000 machines installed**
- **Minimize unplanned downtime** through preventative maintenance
- **Comprehensive training** for your products and software
- Fast supply of **original spare parts**

Contact your local Service Agent for information on service, training, maintenance contracts, software updates, spare parts and more!



Архангельск (8182)63-90-72  
 Астана (7172)727-132  
 Астрахань (8512)99-46-04  
 Барнаул (3852)73-04-60  
 Белгород (4722)40-23-64  
 Брянск (4832)59-03-52  
 Владивосток (423)249-28-31  
 Волгоград (844)278-03-48  
 Вологда (8172)26-41-59  
 Воронеж (473)204-51-73  
 Екатеринбург (343)384-55-89

Иваново (4932)77-34-06  
 Ижевск (3412)26-03-58  
 Казань (843)206-01-48  
 Калининград (4012)72-03-81  
 Калуга (4842)92-23-67  
 Кемерово (3842)65-04-62  
 Киров (8332)68-02-04  
 Краснодар (861)203-40-90  
 Красноярск (391)204-63-61  
 Курск (4712)77-13-04  
 Липецк (4742)52-20-81

Магнитогорск (3519)55-03-13  
 Москва (495)268-04-70  
 Мурманск (8152)59-64-93  
 Набережные Челны (8552)20-53-41  
 Нижний Новгород (831)429-08-12  
 Новокузнецк (3843)20-46-81  
 Новосибирск (383)227-86-73  
 Омск (3812)21-46-40  
 Орел (4862)44-53-42  
 Оренбург (3532)37-68-04  
 Пенза (8412)22-31-16

Пермь (342)205-81-47  
 Ростов-на-Дону (863)308-18-15  
 Рязань (4912)46-61-64  
 Самара (846)206-03-16  
 Санкт-Петербург (812)309-46-40  
 Саратов (845)249-38-78  
 Севастополь (8692)22-31-93  
 Симферополь (3652)67-13-56  
 Смоленск (4812)29-41-54  
 Сочи (862)225-72-31  
 Ставрополь (8652)20-65-13

Сургут (3462)77-98-35  
 Тверь (4822)63-31-35  
 Томск (3822)98-41-53  
 Тула (4872)74-02-29  
 Тюмень (3452)66-21-18  
 Ульяновск (8422)24-23-59  
 Уфа (347)229-48-12  
 Хабаровск (4212)92-98-04  
 Челябинск (351)202-03-61  
 Череповец (8202)49-02-64  
 Ярославль (4852)69-52-93

Киргизия (996)312-96-26-47    Казахстан (772)734-952-31    Таджикистан (992)427-82-92-69

<http://lvd.nt-rt.ru> || [dvz@nt-rt.ru](mailto:dvz@nt-rt.ru)

# Strippit PX Specifications

## PUNCHING SPECIFICATIONS

Nominal workpiece size without repositioning	1250x2500 mm
Maximal workpiece size with 1 repositioning	1250x4000 mm
X-axis travel	2500 mm
Y-axis travel	1250 mm
Maximum material thickness	6,35 mm
Max. sheet weight on table	150 kg
Tonnage	200 KN
Tool change time	1 to 5 sec.
Combined positioning speed X-Y	161 m/min.
Hitrates on 25mm centers (2mm working stroke - 4mm total stroke)	505 HPM
Hitrates in nibbling 1mm pitch (2mm working stroke - 4mm total stroke)	910 HPM
Hitrates in marking	1650 HPM
Maximum feed clearance	80 mm
Repetitive accuracy per meter	± 0.03 mm
Positioning accuracy per meter	± 0.10 mm
Tooling style	Trumpf®
Number of tool positions in magazine	20 pcs
Number of indexable tool positions	20 pcs
Max. Number of tools using indexable multitool	200 pcs
Max. tool diameter	90 mm
Number of sheet clamps	3 CNC relocatable with part pullout sensing
Max clamp spread	2100 mm
Wheel tool capacity	standard
Indexable Multitool capacity	standard
Tapping tool capacity	optional
Work chute	525x500 mm
Average power consumption in idle run	0,9 KW
Average power consumption in working	6,7 KW
Compressed air consumption	1,5 Nm³/hr
Machine dimensions (excluding light guards and conveyors)	
Length	5083 mm
Width	5465 mm
Height	2492 mm
Weight	16.100 kg

## STRIPPIT PX-1225

1250x2500 mm
1250x4000 mm
2500 mm
1250 mm
6,35 mm
150 kg
200 KN
1 to 5 sec.
161 m/min.
505 HPM
910 HPM
1650 HPM
80 mm
± 0.03 mm
± 0.10 mm
Trumpf®
20 pcs
20 pcs
200 pcs
90 mm
3 CNC relocatable with part pullout sensing
2100 mm
standard
standard
optional
525x500 mm
0,9 KW
6,7 KW
1,5 Nm³/hr
5083 mm
5465 mm
2492 mm
16.100 kg

## STRIPPIT PX-1530

1524x3048 mm
1524x5000 mm
3048 mm
1524 mm
6,35 mm
150 kg
200 KN
1 to 5 sec.
130 m/min.
505 HPM
910 HPM
1650 HPM
80 mm
± 0.03 mm
± 0.10 mm
Trumpf®
20 pcs
20 pcs
200 pcs
90 mm
3 CNC relocatable with part pullout sensing
2200 mm
standard
standard
optional
525x500 mm
0,9 KW
6,7 KW
1,5 Nm³/hr
6180 mm
6009 mm
2546 mm
17.570 kg

## AUTOMATION ON PX

Max. sheet dimensions
Min. Sheet dimensions
Max. weight on each pallet
Max. height on each pallet
Footprint (LxW) including machine and conveyors according CE
Height of the system
CT-P 6 pallets
CT-P 10 pallets

## COMPACT TOWER CT-P1225

1250x2500x3,5 mm
1000x1000x0,5 mm
2200 kg
240 mm
incl. Skid
11198x9963 mm
4330 mm
5830 mm

## COMPACT TOWER CT-P1530

1524x3048x3,5 mm
1000x1000x0,5 mm
3000 kg
240 mm
incl. Skid
13090x10650 mm
4330 mm
5845 mm

## PA1225

1250x2500x3,5 mm
500x1000x0,5 mm
2500 kg
310 mm
incl. Skid

11940x8450 mm
2492 mm